



# STRIVE

Tackling the structural drivers of HIV

## Graphics for Chapter 7: Addressing structural drivers of HIV among young people in Eastern and Southern Africa: evidence, challenges and recommendations for advancing the field

Authored by Mitzy Gafos, Tara Beattie, Kirsten Stoebenau, Deborah Baron, Renay Weiner, Joyce Wamoyi, Lebohang Letsela, James Hargreaves, Gerry Mshana, Saidi Kapiga, Anne Stangl, Michelle Remme, Lori Heise Janet Seeley

In book titled: **Preventing HIV Among Young People in Southern and Eastern Africa: Emerging Evidence and Intervention Strategies**

Edited by Kaymarlin Govender and Nana K. Poku



Figure 7.1: STRIVE conceptual framework mapping relationships between HIV, proximal determinants of risk and structural factors

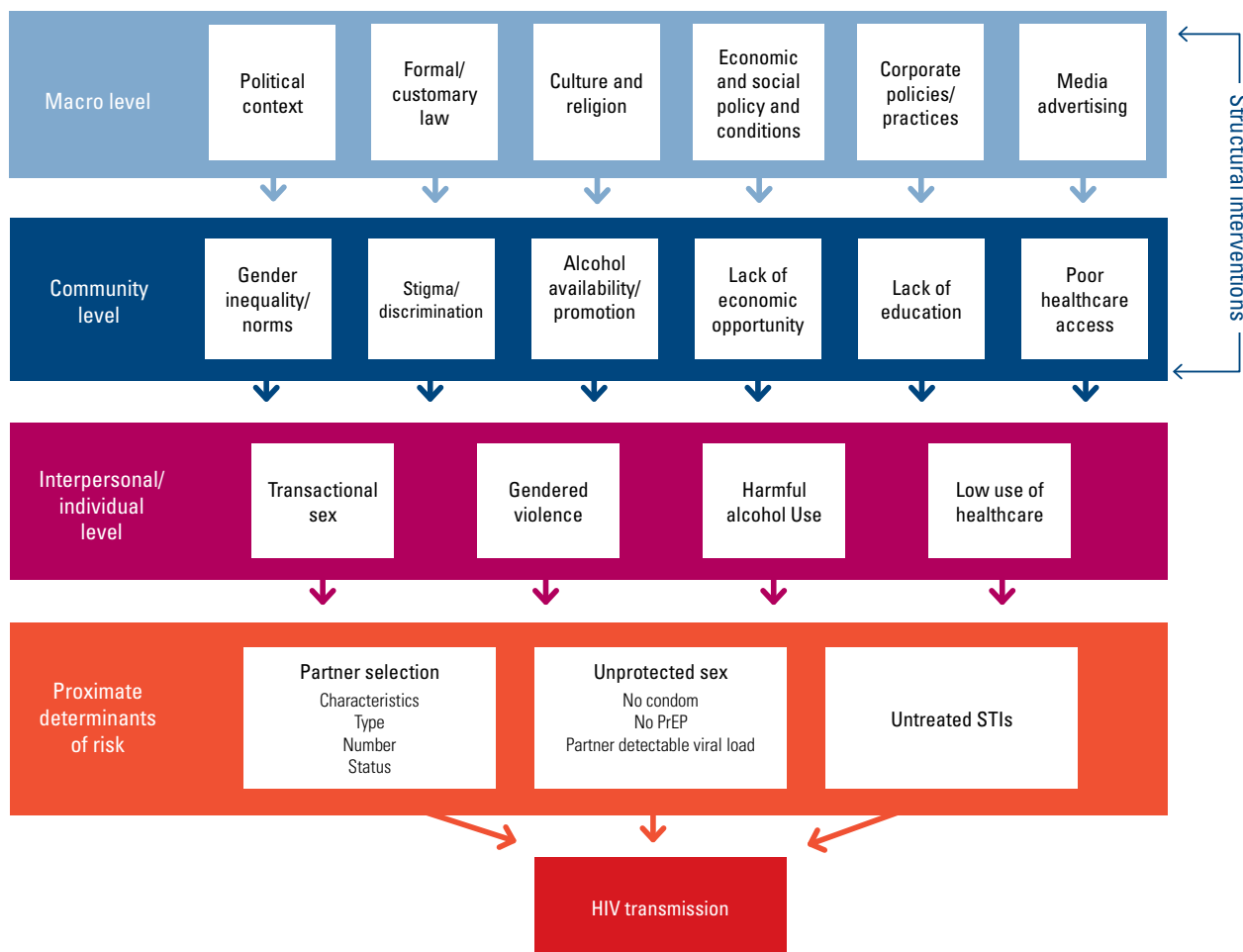


Figure 7.2 Potential pathways of change which may be influenced by greater attendance and greater attainment within schools

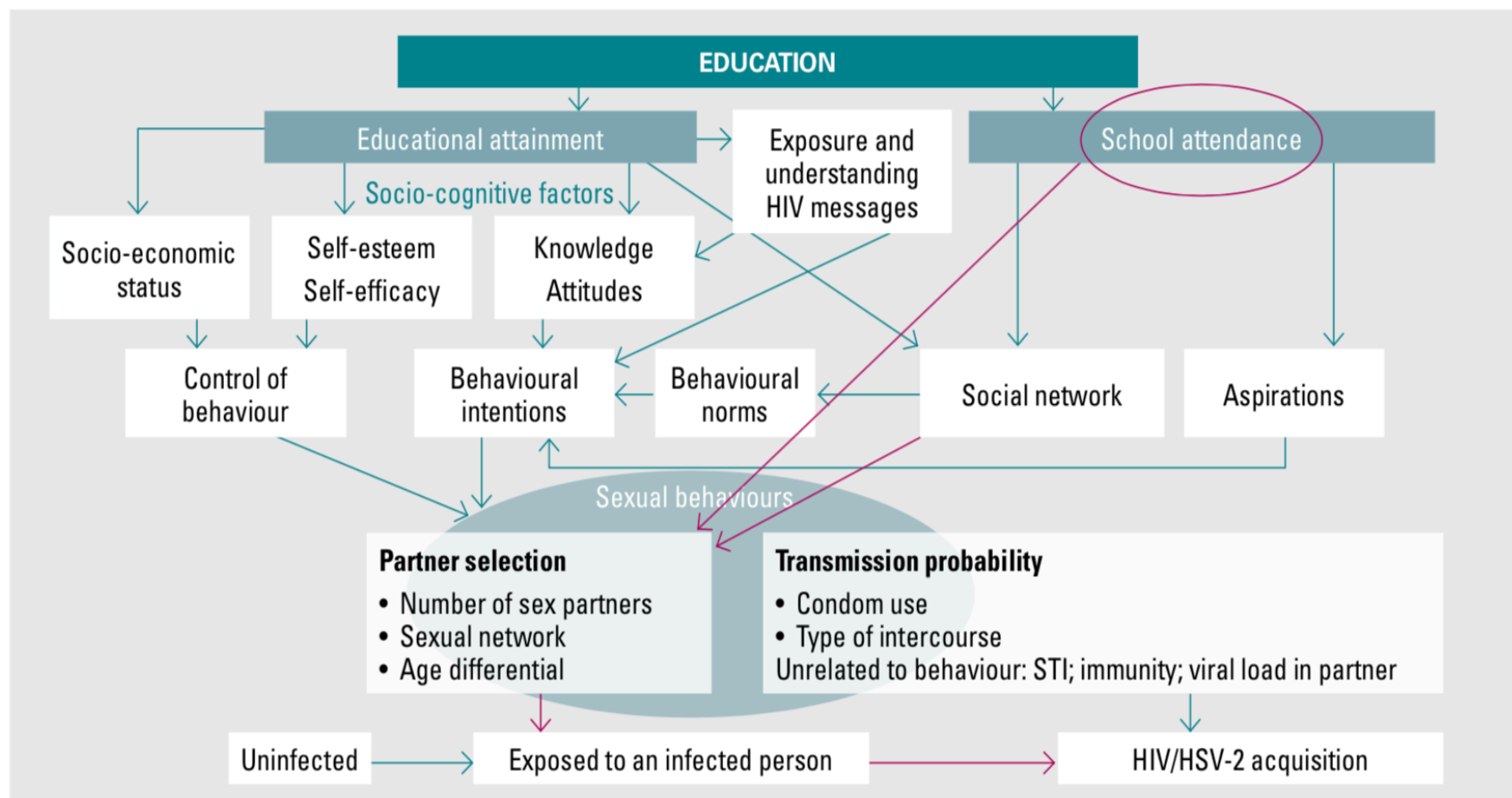
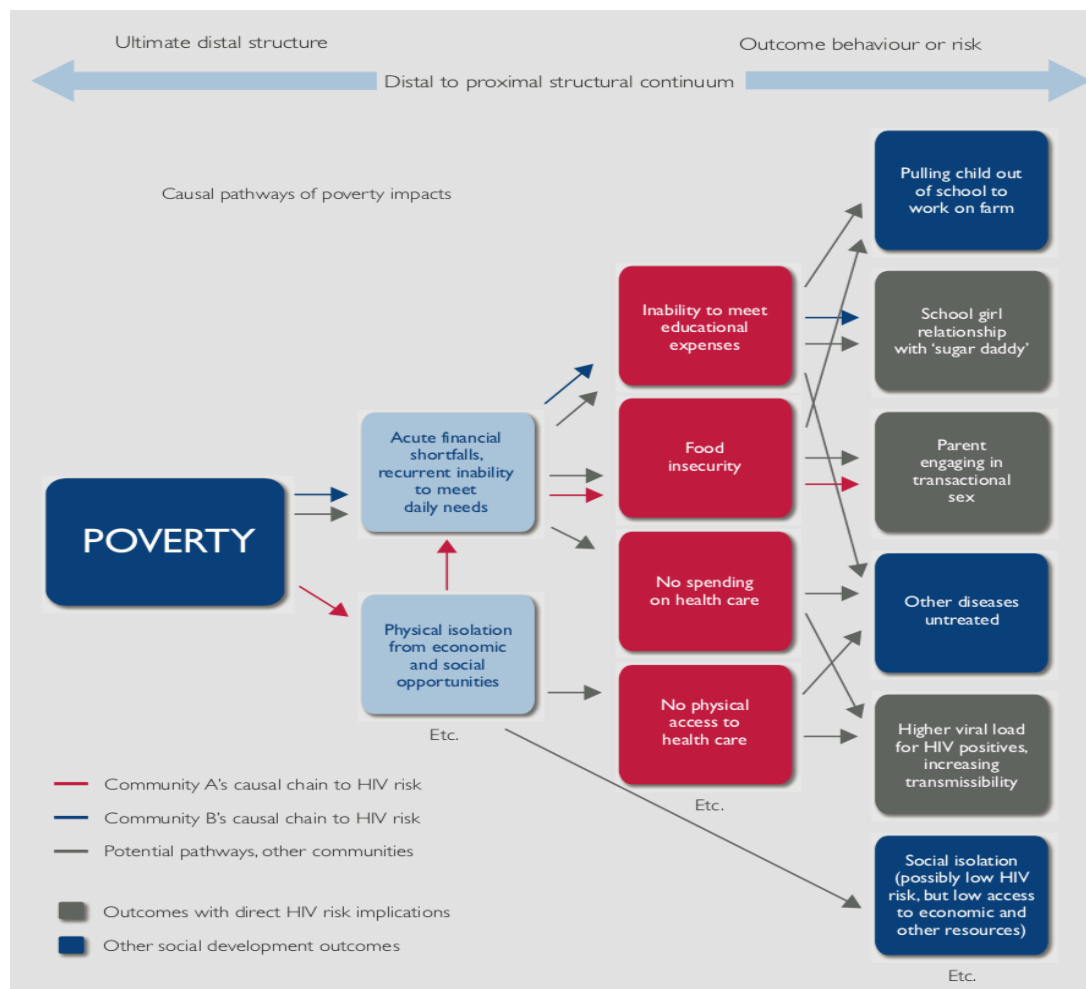


Figure 7.3 Potential pathways through which poverty impacts on HIV risk



# Figure 7.4 Potential pathways between intimate partner violence and women's risk of HIV acquisition



Potential pathways between intimate partner violence and women's risk of HIV acquisition

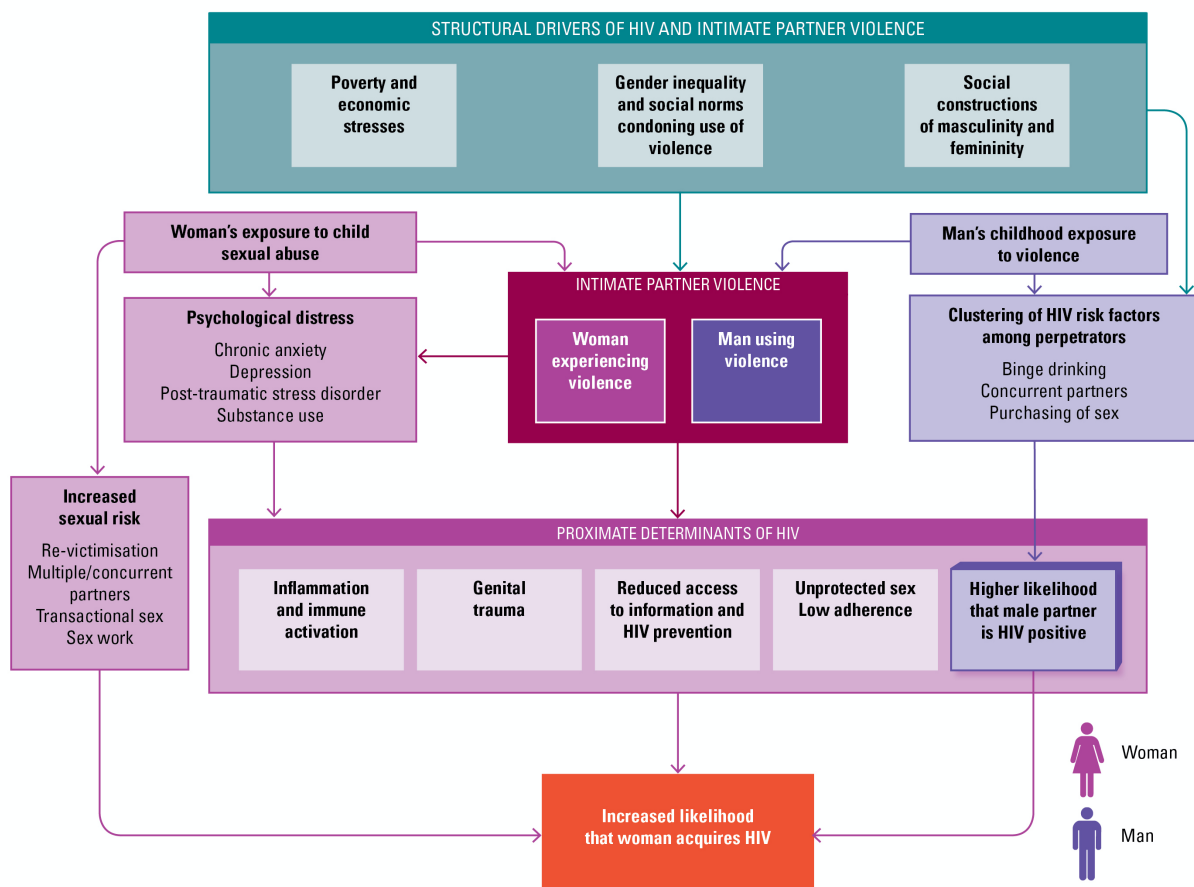


Figure 7.5: Evidence of multiple impacts from structural interventions

